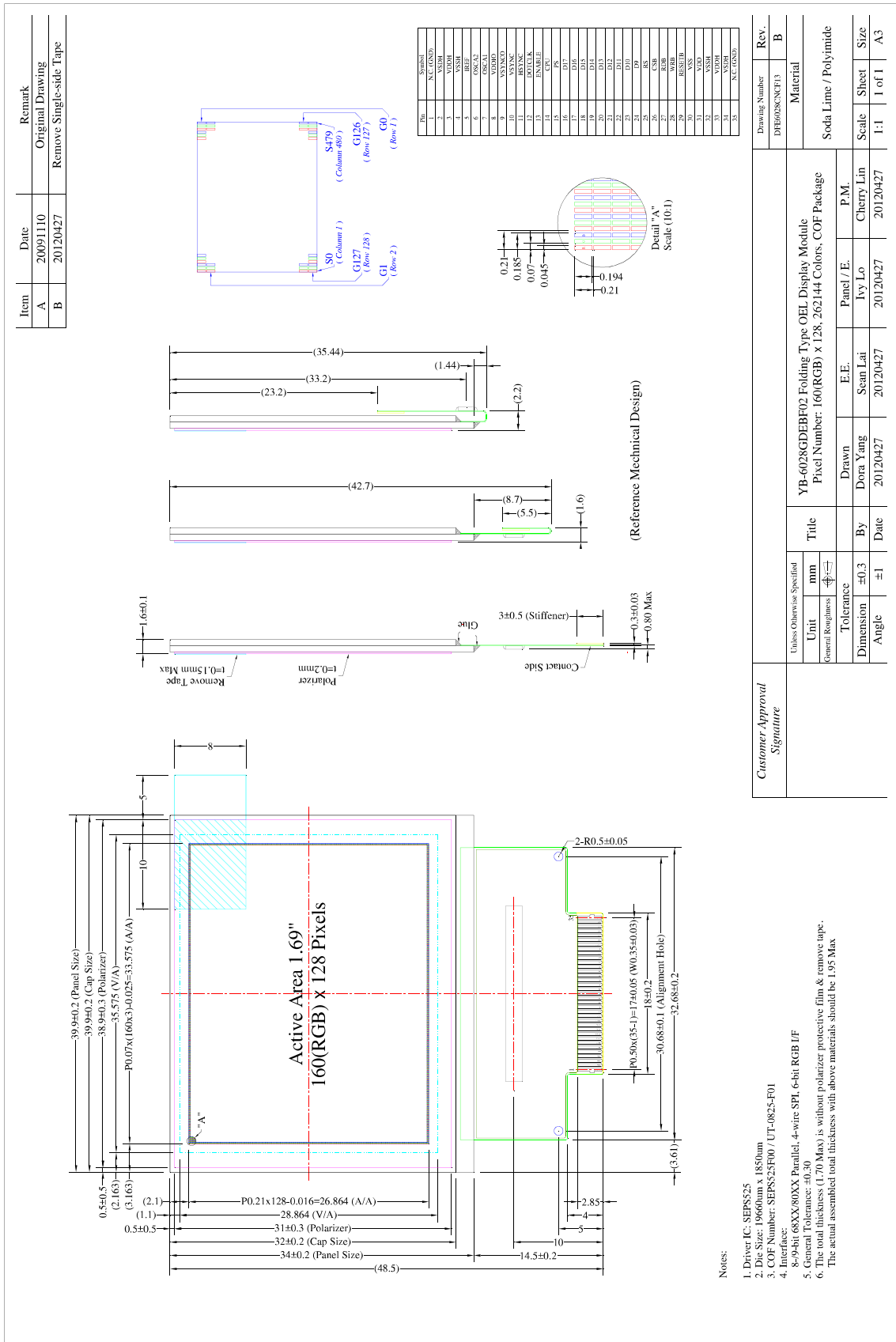


1.4 Mechanical Drawing



| Item | Date | Remark |
|------|----------|-------------------------|
| A | 20091110 | Original Drawing |
| B | 20120427 | Remove Single-side Tape |

| Customer Approval | | Signature | |
|-------------------|------|--------------|------------------------------------------------|
| Unit | mm | Title | YB-6028GDEBF02 Folding Type OEL Display Module |
| General Roughness | 0.3 | Pixel Number | 160(RGB) x 128, 262144 Colors, COF Package |
| Tolerance | ±0.3 | Panel / E. | P.M. |
| Dimension | ±0.3 | By | Dora Yang |
| Angle | ±1 | Date | 20120427 |
| | | Seam Lai | 20120427 |
| | | Ivy Lo | 20120427 |
| | | Cherry Lin | 20120427 |
| | | Scale | 1:1 |
| | | Sheet | 1 of 1 |
| | | Size | A3 |

Notes:

- Driver IC: SEPS525
- Die Size: 1960um x 1850um
- COF Number: SEPS525F00 / UT-0825-F01
- Interface: 8-94-bit 68XX/80XX Parallel, 4-wire SPI, 6-bit RGB IF
- General Tolerance: ±0.30
- The total thickness (1.70 Max) is without polarizer protective film & remove tape. The actual assembled total thickness with above materials should be 1.95 Max